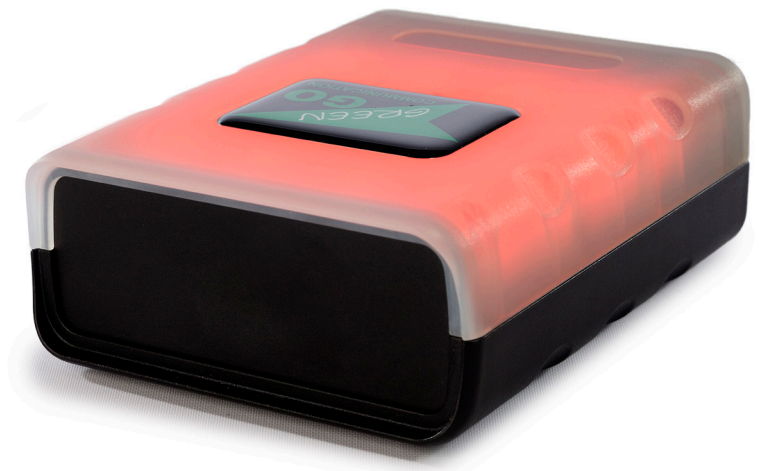


BEACON

Beacon Signal

Beacon Signal Flasher Call Light to connect to the Green-GO network



Features

- Ethernet port to Green-GO network
- 16 strong RGB Leds flashing on a CALL signal to group or user
- BEACON will "learn" to which group or user it should react by keeping pressed the push button during a CALL

Specifications

- Dimensions of Beltpack: 145mm x 85mm x 30mm
- Weight : 400g
- Powered by Power over Ethernet (PoE standard 48V)
- Connections:
 - 1 Neutrik RJ45 Ethercon connections
 - 1 USB connector for remote or future functions 3/8 thread to mount on any microphone stand
- Controls: push button for storing the user or group name



32 Channels

This system has 32 channels, a program audio channel and an extra channel to receive direct user communication.



250 Groups

An analogue system has one or two groups, the Green-GO system offers a maximum of 250 groups.



3000 Users

A user can be active on any device, even on multiple devices. Each user has a unique ID and a human readable name.